

LASER Series

Fumes and odors collectors for microapplications of laser marking, welding.



HIGH PRESSURE DUST COLLECTOR FOR LASER



Specifications

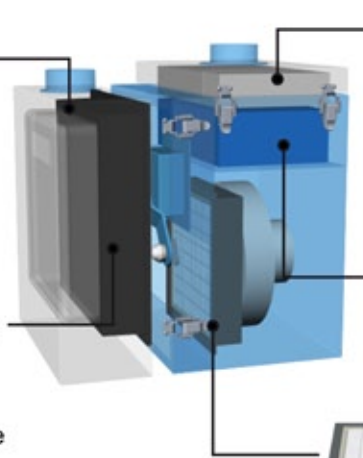
- Compact, mobile, easy to integrate.
- Strong static pressure: 9.5 kPa.
- Automatic reinitialization system of the filter.
- Patented filter with zeolite, for a longer lifetime of the filters.
- Activate carbon to remove odors.
- HEPA filter (cleanroom Class 100 000 ~ 10 000).
- Possibility to evacuate air to outside.

Suction system

Filter 1: filter protected from dry and sticky particulates thanks to zeolite.



Automatic shaking: surface sweep of the first filter in order to unstick the particulates and to extend the filter's time of use.



Final filter: HEPA filter for a clean exhaust air. Filtration rate of 99.97% for particulates $\geq 0.3\mu$.

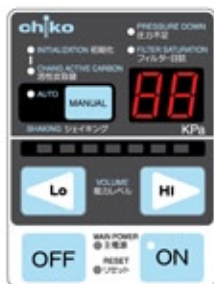


Activated carbon filter: efficient elimination of odors for a more comfortable olfactory environment.



Filter 2: capture of fine particulates. Filtration rate of 98% of particulates $\geq 0.3\mu$.

Control panel



1. Indicator of filter saturation.
2. Indicator for the change of activated carbon.
3. Signal of anomaly: electric overload, abnormal temperature (automatic interruption of the dust collector).
4. Starting of the filter sweeping.
5. Speed regulator (7 levels).
6. Stop/Start.
7. Reset button.

Synchronization plug

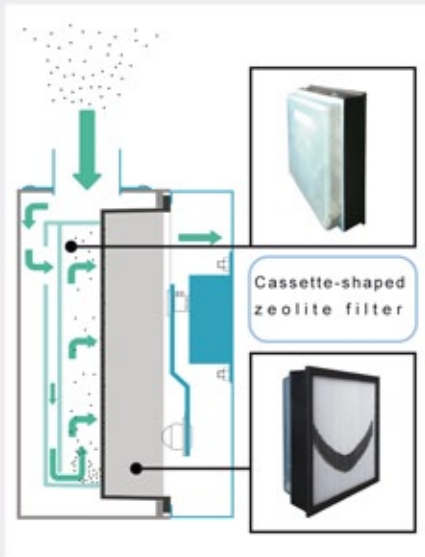


1. Synchronization plug for a remote control.
2. The use of the synchronization leads to the deactivation of the dust collector control panel.
3. Option: 3 or 5 meters of wire with male connection



CBA-1000AT-HC-DSA-V1-CE

Unique and optimal patented system



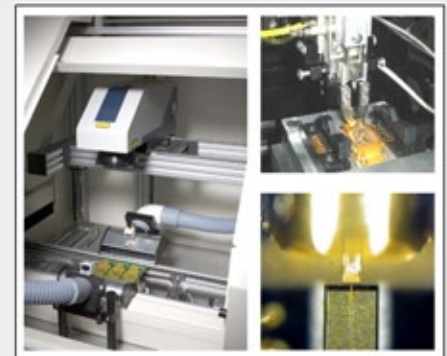
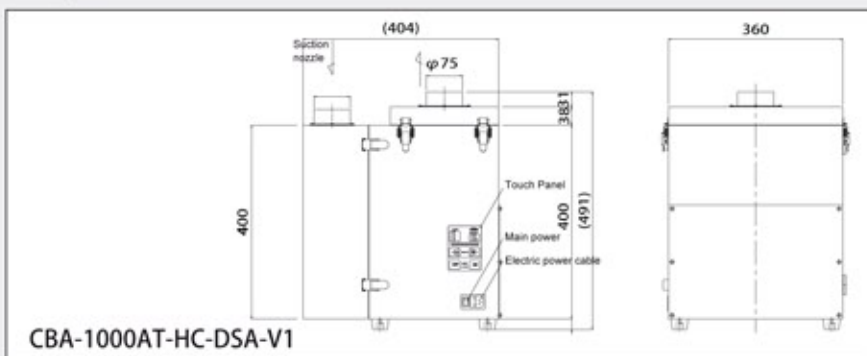
CBA-1000AT-HC-DSA-V1-CE offers a level of optimal suction efficiency thanks to early unsaturation of the main filter. This technology enables a top management of the sticky particulates.

Phases of the particulates absorption

The first filter has a neutralizing action thanks to the combination of a filter and absorbing zeolite. This latter plays a role of obstruction to the fumes and filter protection.

This Chiko Airtec process extends noticeably the lifetime of the filter and reduces the number of replacements. It enables thus time and budget savings.

Diagram



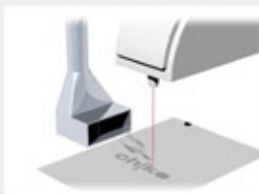
Technical specifications

Reference	Power	Voltage	Frequency	Intensity	Maximal air flow	Maximal static pressure	Maximum noise level
CBA-1000AT-HC-DSA-V1	450W	100V-240V	50/60Hz	6.0A	3.2m ³ /min	9.5kPa	54-59dB
Reference	Internal diameter	Touch Panel	Synchronization	Weight	Dimensions (L×W×H)		
CBA-1000AT-HC-DSA-V1	Φ 75 × 1	○	○	30.0kg	404 × 360 × 491		

Filters

Reference	Filter 1	Filter 2	HEPA Filter	Activation
CBA-1000AT-HC-DSA-V1	HDF-3535-120-ZEO	GHF-2030-50	HEP-3220-69	ACC-3220-100

Applications



- Perfectly suitable for laser micromachining: micromarking, microcutting, microwelding.
- Fumes and odors generated by laser marking.
- Fumes from welding.